

58+ Acres – Land for Industrial Development or Investment

Oshkosh Southwest Industrial Park

Municipal Sewer & Water

18 Acres also For Sale

16.68 Acres Also For Sale

Hwy 91

Hwy 44

Waukau Ave

Clay Rd

Belfield Dr

Map

Photos

Key Attributes:

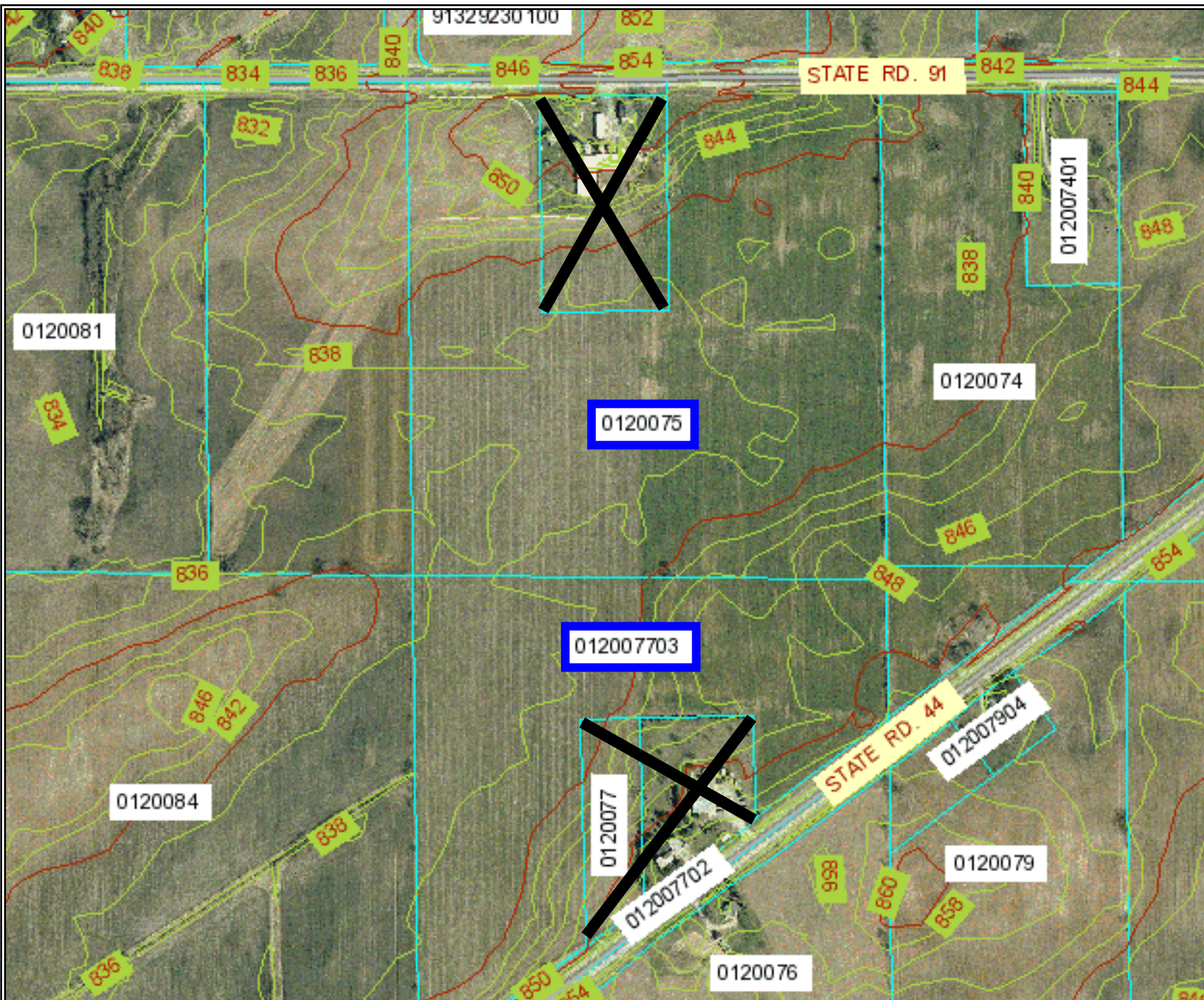
- Frontage on 2 State Hwys (State Road 44 & 91)
- Sewer & Water at Lot Line (Annexation Required)
- No Wetlands, Flood Plain or Streams or Shore land Zoning (per County Online Information)
- No Industrial Park Covenants or Restrictions
- Attractive Asking Price

\$1,100,000

Earl Real Estate, Inc. COMMERCIAL & INDUSTRIAL

947 Trillium Trail, Oshkosh WI 54904 Office: 920.426.0417 Fax: 920.426.3442 Email: ge@gebroker.com

Terms of Use



Winnebago County Topographical Illustration