

FOR LEASE Commercial/Industrial Facility



3042 Oregon Street, Oshkosh WI

Building Information

Total Square Feet: 4,992 SF

Lease Space Available: 3,550 SF

Office: 1,150 SF

Shop/Warehouse: 2,400 SF

Built: 1993

Drive-Thru Bay:
2 – 12'x12' Overhead Doors

Electric Service: 200/amp

Offices are Air Conditioned

Shop/Warehouse is Heated Only. No A/C

Site Information

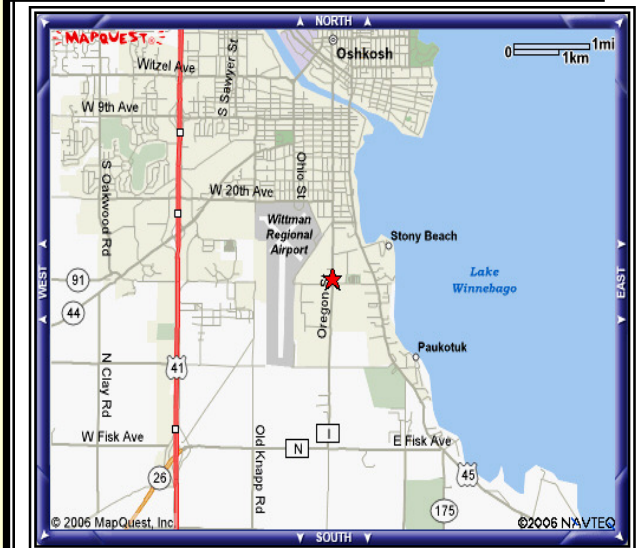
Zoning: HI - Heavy Industrial District

Sewer and Water: Municipal

Parking: Paved Parking on North and South
Sides of Building

Lease Rate: \$2,300 per month plus Utilities
MINIMUM 2 YEAR LEASE

Landlord Pays: Real Estate Taxes



Earl Real Estate, Inc.

947 Trillium Trail
Oshkosh, WI 54904
920.426.0417 FAX: 920.426.3442

Serving the "new north"

COMMERCIAL & INDUSTRIAL

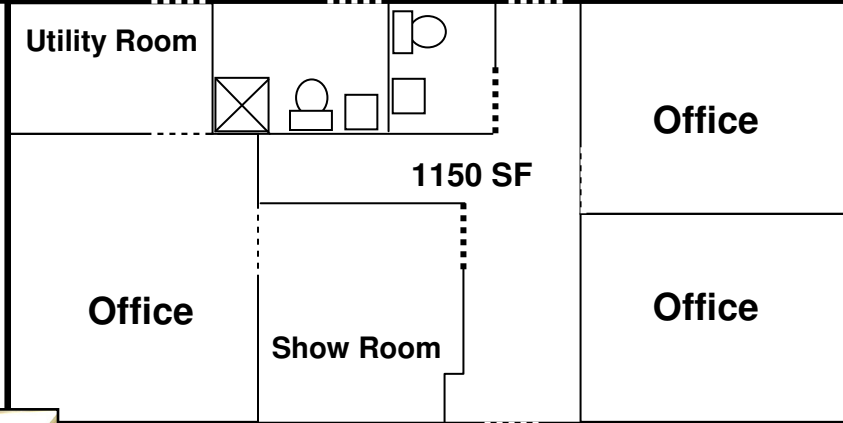
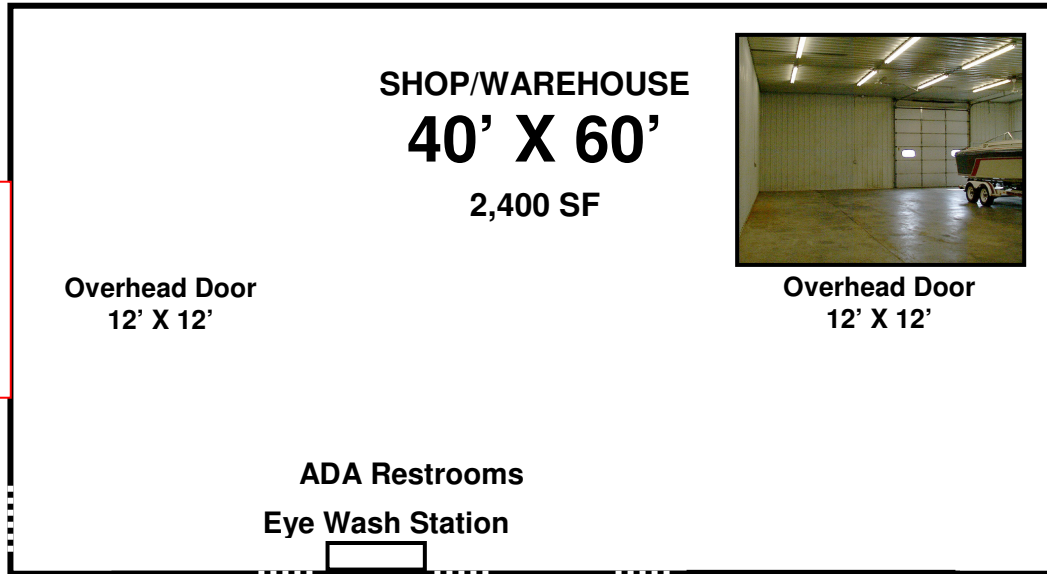
Web Site: www.gebroker.com

Email: ge@gebroker.com



3042 Oregon Street, Oshkosh WI

Floor Plan



Front Entrance

