

# Affordable Units - Built-to-Suit your Needs

Click Here  
To View  
Brief Video



**New Office Units - 2201 Oregon St., Oshkosh, WI**

**Lease Rate: \$8.50 sq. ft. NNN**

**Remaining Unit Sizes 1,428 & 1,031 Sq Ft New Build-out to Suit Your Needs**

**\* On Bus Route, \* Near Oshkosh Post Office \*Southern Industrial District**

**Parking: Paved & Lighted Parking**



*Gear Real Estate, Inc.*

Office: 920.426.0417

**COMMERCIAL & INDUSTRIAL**

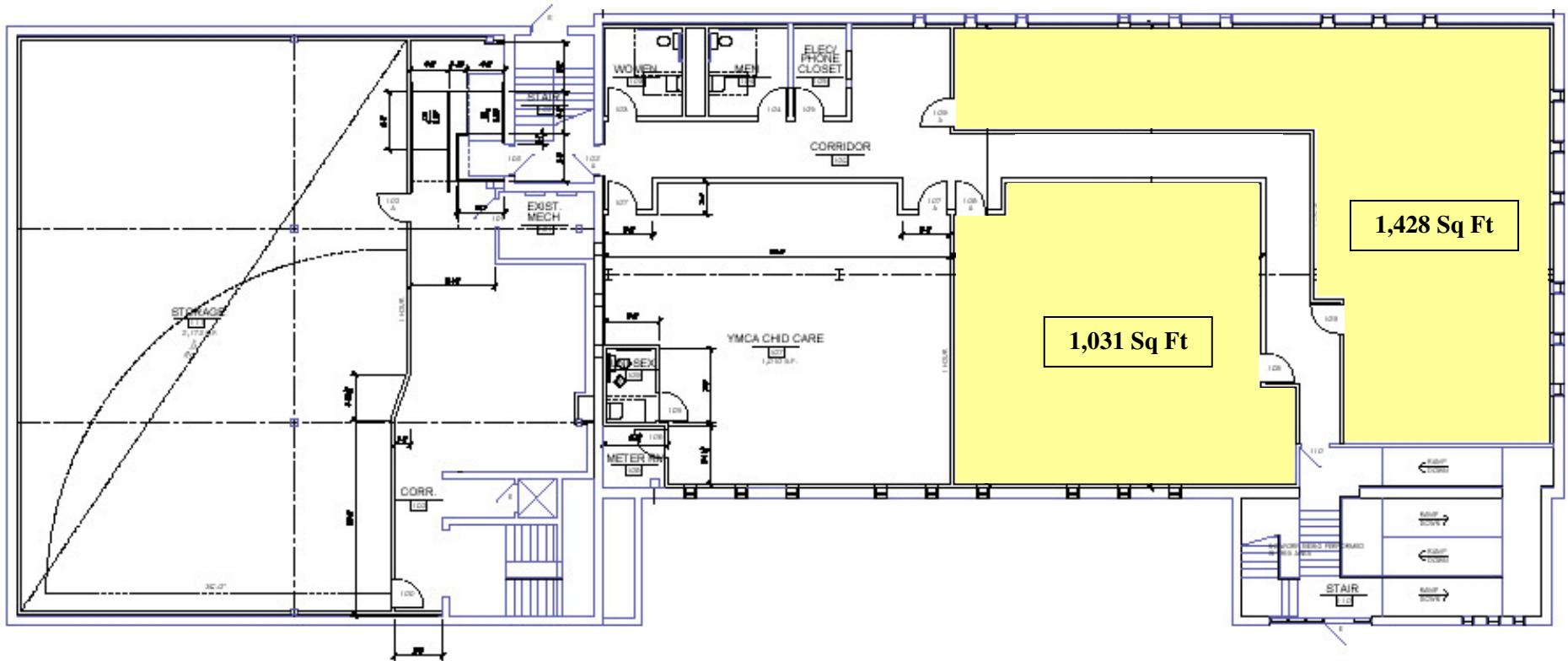
Web Site: [www.GEarRealEstate.com](http://www.GEarRealEstate.com)

Email: [ge@gebroker.com](mailto:ge@gebroker.com)

Information contained herein is taken from sources deemed reliable but is not guaranteed and is subject to change.

P  
A  
G  
E  
  
T  
W  
O

# Landlord will Create a Floor Plan that Suits Your Needs



## On-Site Parking

